

Real Estate Journal

THE LARGEST WEEKLY COMMERCIAL/INVESTMENT NEWSPAPER IN THE WORLD

August



Henry Vickers

Karyn McFarland
building on North Rd., Sudbury, Mass.

Whelan Associates sells 50,540 s/f Easton medical office building for \$14.7 million; Barnes of Sea Watch Realty brokers sale

Cassum, Tepedino & LaBine of Holliday Fenoglio Fowler arrange \$140 million financing for 471 room Renaissance Boston hotel

NAI Hunneman named property manager for 1010 Mass. Ave. by the city of Boston; 220,770 s/f South End office building

KeyPoint Partners awarded property mgmt. contract for 15-45 Dan Rd., Canton Commerce Center, by Great Point Investors

Pro Con completes \$1.3 million tenant fit-up services for Portsmouth Regional Hospital; 17,000 s/f rehab-wellness center

Olympia Development completes \$18m fast-track renovation for 57 room Inn by the Sea Resort in Portland; Wright-Ryan GC

McCourt of The Conrad Group executes \$11.5m sale of 80,000 s/f offices in Weymouth to Foxrock Properties at 90 Libbey Parkway

Anderson of Prudential Rush Realty and Rohrer of Grubb & Ellis Coldstream cobroker \$3.502 million sale of 18,904 s/f offices

CB Richard Ellis arranges \$44.8 million for Hampshire Partners' retail, office, industrial portfolio in Newington, Conn.

Fantini & Gorga arrange \$12.9 million funding for Eastern Mortgage Capital for 123 bed nursing center in Winchester, Mass.

Hughes and Bradley of New Dover Assoc. broker \$5.75 million sale of 69,376 s/f flex building for Marlborough County Realty

Sydney Assoc. to transform Fresh Pond into 19,400 s/f landmark retail center in Cambridge; Columbia Construction CM

CB Richard Ellis brokers \$10.2 million sale of 100 Bank St. in Burlington, Vt. to Marley Properties for Kevin Donohoe Co.

Durgin of Jack Conway arranges \$1.5 million sale of 14,000 s/f office building in Milton, Mass. for K&C Realty

David Marcus Ptrs. and National Grid hold topping off of 312,000 s/f Reservoir Woods LEED Gold Waltham office building

Zelman of ERA Broder Comm'l. negotiates 38,256 s/f \$3.675m sale of New Park Office & Conference Center in Hartford, Conn.

McCormick and Mulready of CBRE broker \$14.675m sale of 230,000 s/f Powder Forest Business Park in Simsbury, Conn.

Vestri of Steffian Bradley designs Hastings Cos.' \$50m BackRiver Townhomes in Hingham, Mass.; 50% of 45 units pre-sold

Chozick Realty arranges \$15.775 million sale of 125 units to Windsor Castle for J. Winkler Group in Bloomfield, Conn.

Bufftree Building breaks ground for \$8.8 million 20,200 s/f public safety facility for Harwich, Mass.; Kaestle Boos provides design

Varholak, Purpura and Smith of Richards Barry Joyce & Partners handle 54,457 s/f Cambridge, Mass. lease for Archon Group

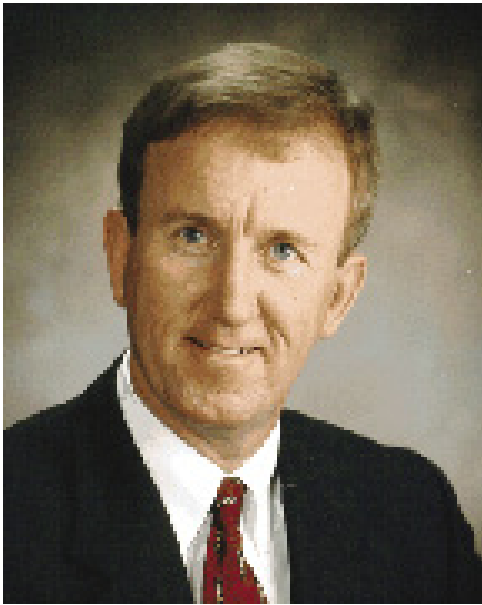
Tito and Aron of NAI Hunneman rep Arista Foxborough in \$6.5 million sale of 14,828 s/f retail site at Chestnut Green, Foxborough

Blakely of TRB & Assoc. reps Kent Realty in \$6 million sale of Wallace Plaza, 127,469 s/f in Fitchburg, Mass.

Todreas Hanley selected to revitalize 77,000 s/f Thorne's Marketplace, Northampton, Mass.; Anderson Porter Design architect

Cummings Properties serves as general contractor for 63,000 s/f speculative office

Bulfinch Cos. renovates and leases 15,000 s/f at 95 Mt. Auburn St., Cambridge, to Verizon & Inv. Fund for Foundation
Hampshire Ptrs. Fund VII acquires 87,500 s/f industrial building from Billerica Rangeway LLC off Rte. 3 in Mass.
Dimeo Const. tops off new 150,000 s/f Fall River Trial Court designed by Finegold Alexander on South Main St.



Alan Doyle



Michael Sherman



Kathy Stein



Steven Spangle



Paul DiGeronimo



James Stubblebine



Scott Lajoie



Richard Goulet



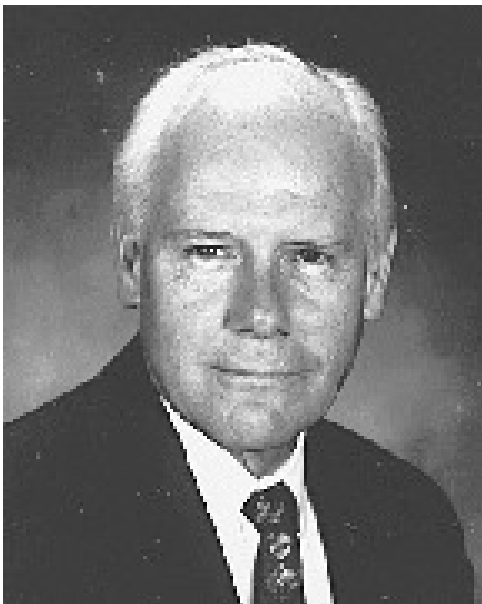
William Greene



Jonathan Frank



Arlon Brown



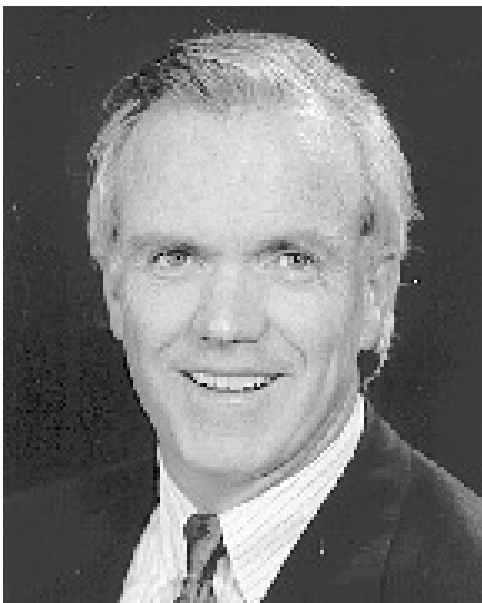
Harry Shea



John Cregan



Lori Raleigh



Paul Durgin



Al Kozhuk



William Low



Eric O'Brien



Katherine Wellington



Ben Edgar



Marc Cote



Don Mace