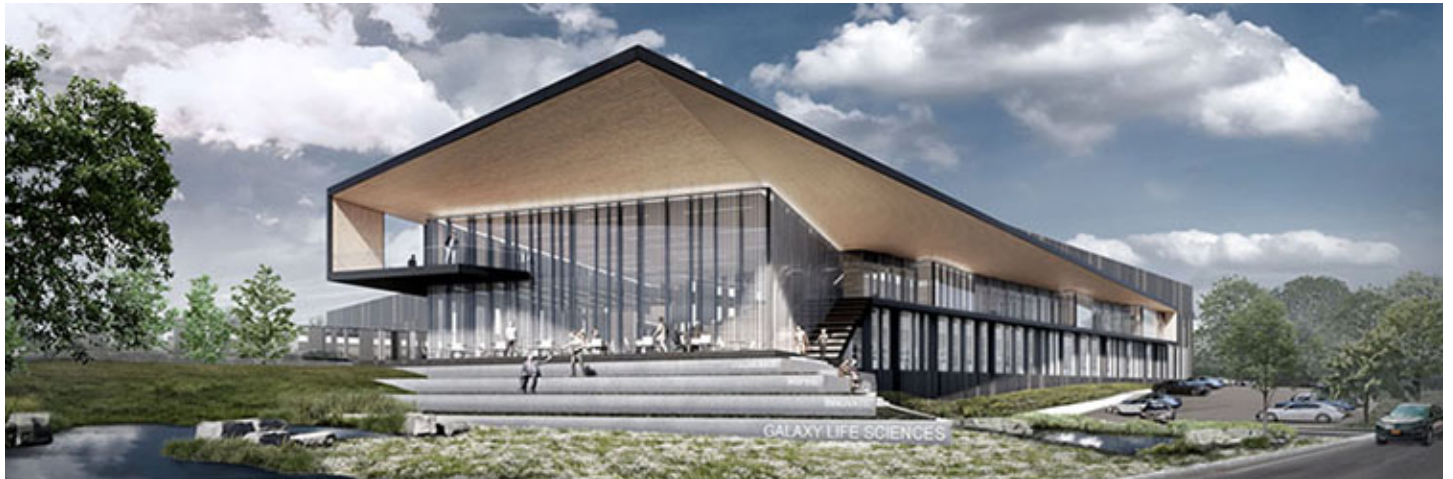




# nerej

## **Worcester Business Development Corp. and Galaxy Life Sciences to build \$50 million facility at The Reactory**

August 28, 2020 - Front Section



Worcester, MA Worcester Business Development Corp. (WBDC) and Galaxy Life Sciences, LLC (Galaxy) of Webster, Mass., have signed a land deal to build a clinical and commercial manufacturing facility at The Reactory, a 46-acre master-planned biomanufacturing campus located at 305 Belmont St.

The Galaxy land deal is the second transaction at The Reactory in the past 75 days.

In May, Shanghai-based WuXi Biologics purchased land at The Reactory to build its first production facility in the United States, a clinical and commercial manufacturing facility due to be operational in 2022.

This purchase involves the sale of six acres, as well as Galaxy having the rights to acquire all remaining land in the Reactory bio-manufacturing park. On this first parcel Galaxy will construct a flexible facility enabling biotechnology or pharmaceutical companies to conduct research, development, and manufacturing of clinical and commercial products. Galaxy estimates the costs to build the facility to be \$50 million and could increase considerably depending upon interior specifications needed to meet tenant manufacturing requirements.

“The need for flexible and sustainable biomanufacturing in the region has never been greater,” said Mike O’Brien, CEO of Galaxy. “We stand ready and able to help our potential life sciences partners turn their innovative ideas into commercial products at faster-than-industry-average speed to market.”

Massachusetts is at the forefront in the fight against COVID-19 with more than 100 local companies working on various treatments and vaccines and more than one-sixth of active coronavirus-related National Institutes of Health (NIH) funding going to Massachusetts-based institutions.

“The Commonwealth continues to be the global leader in life sciences, powering growth and life-changing innovation,” said lieutenant governor Karyn Polito. “The continued development of The Reactory serves to strengthen that position.”

The WBDC is working with the city to construct and upgrade the roadway network and all necessary utilities to service the sites at The Reactory. This essential infrastructure work is scheduled to start this fall. Upon completion, Galaxy is considering future development opportunities on the remaining pad-ready sites that will be serviced by all utilities.

“The attention that this campus has drawn from the life sciences sector proves that Worcester is a burgeoning biomanufacturing destination,” said city manager Edward Augustus. “It is no longer a prospect of potential but a certified reality as we continue to build momentum in the city.”

“This \$50 million plus investment at The Reactory by Galaxy represents the continuation of the growing life sciences ecosystem in Worcester,” said Craig Blais, president and CEO of the WBDC. “The Reactory substantially increases the city’s tax base and most importantly creates a wide range of jobs in the region.”

New England Real Estate Journal - 17 Accord Park Drive #207, Norwell MA 02061 - (781) 878-4540