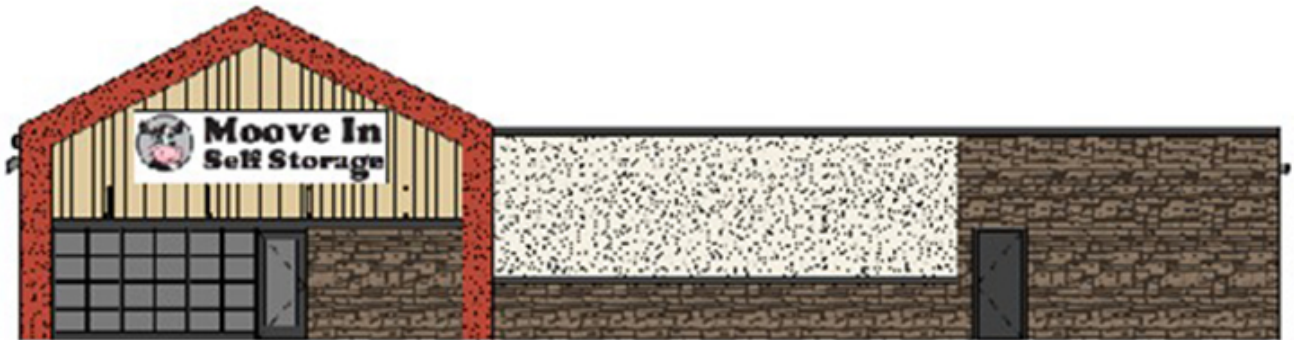




# nerej

## Lyman R.E. sells two acre development site to Moove In Self Storage for \$2 million

October 21, 2022 - Connecticut



Norwich, CT Ron Lyman, CCIM, CEO of Lyman Real Estate Brokerage & Development, brokered the sale of 208-210 Salem Tpke. to Rick Hansberry of Moove In Self Storage.

The new facility will be located next to Walmart and Big Y on Rte. 82, off exit 11 on I-395. The three-story will building contain 87,000 s/f on just under two acres.

Sale price was \$2 million. Lyman represented the buyer and the seller.

Moove In Self Storage is headquartered in York, Penn. Since they opened their first facility in 1998, they have expanded to 55 self-storage facilities located throughout Penn., Maryland, N.J., Conn., Mass., and Iowa

New England Real Estate Journal - 17 Accord Park Drive #207, Norwell MA 02061 - (781) 878-4540