

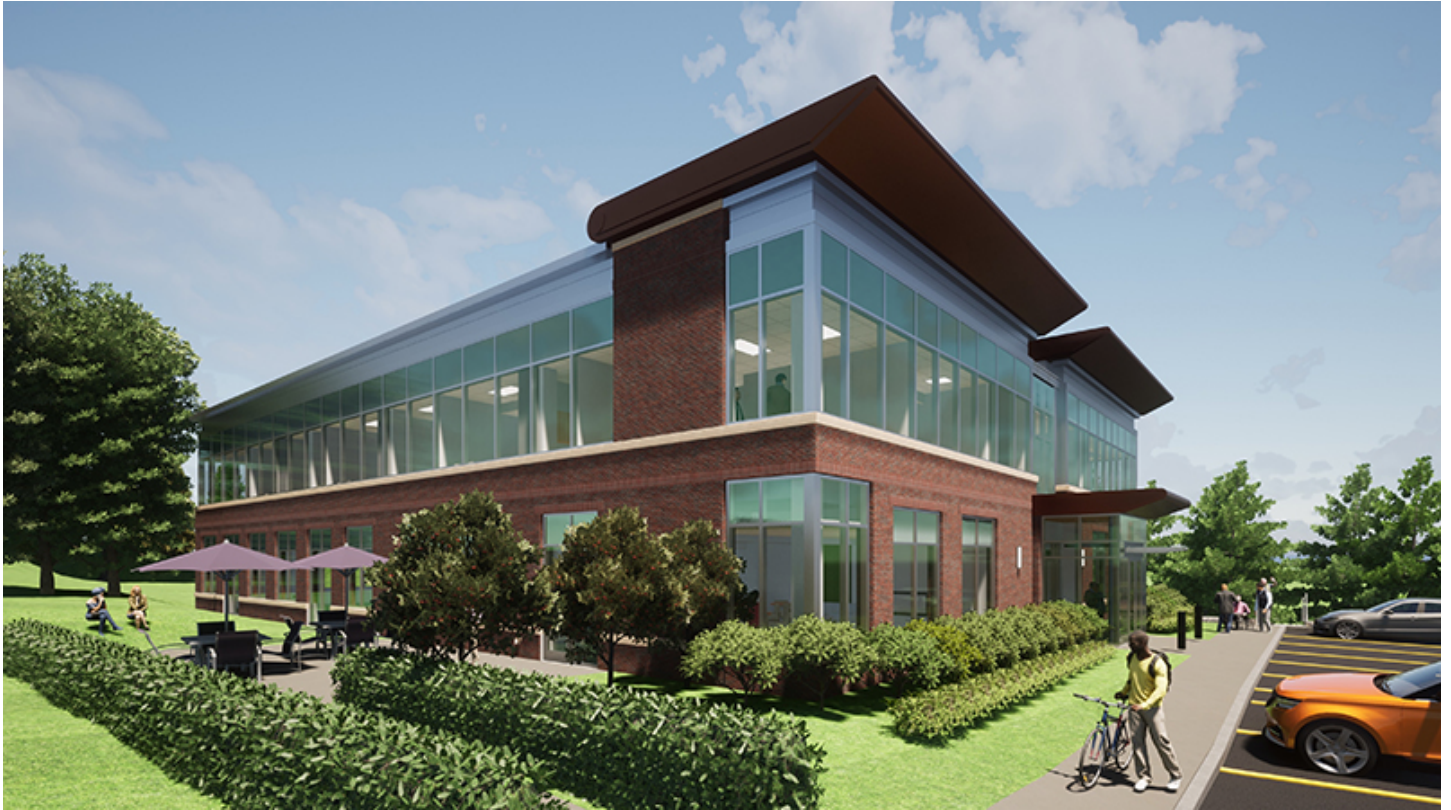


CELEBRATING
55 YEARS

nerej

RP Masiello begins construction of new buildings for Spectrum Health

July 21, 2023 - Construction Design & Engineering



Westborough, MA Construction is underway for two new buildings on the Spectrum Health Services campus. RP Masiello is the design-build construction manager for the project which includes a new corporate headquarters for Spectrum and an Intake Center for people seeking treatment.

“We are pleased to begin this relationship with Spectrum Health, creating new facilities that will help them expanded their important mission,” said David Masiello, president of RP Masiello.

The new three-story headquarters building will include executive and administrative offices, IT service space, and a multi-purpose training center. It is designed to accommodate Spectrum’s current daily operations while also creating additional flexible space for future expansion of the non-profit organization that has been a leader in substance use and mental health treatment programs since 1969.

The new Intake Center will be a two-story steel frame building. The design utilizes the topography of the site so that each level will have direct exterior access. The first floor will host a 24-7 urgent clinic

to evaluate people in crisis and admit them to the appropriate treatment program. The second floor will host a day-program, with classrooms, counselling spaces, offices, and a cafeteria.

With site work and steel erection now underway, both new buildings for Spectrum are expected to be completed in 2024.

In addition to the Spectrum project, RP Masiello is now managing the design-build program for two buildings spanning 1 million s/f of warehouse and manufacturing space for Unified2 Global Packaging in Sutton, Mass. and a new GMP manufacturing facility for EyePoint Pharmaceuticals in Northbridge, Mass.

New England Real Estate Journal - 17 Accord Park Drive #207, Norwell MA 02061 - (781) 878-4540