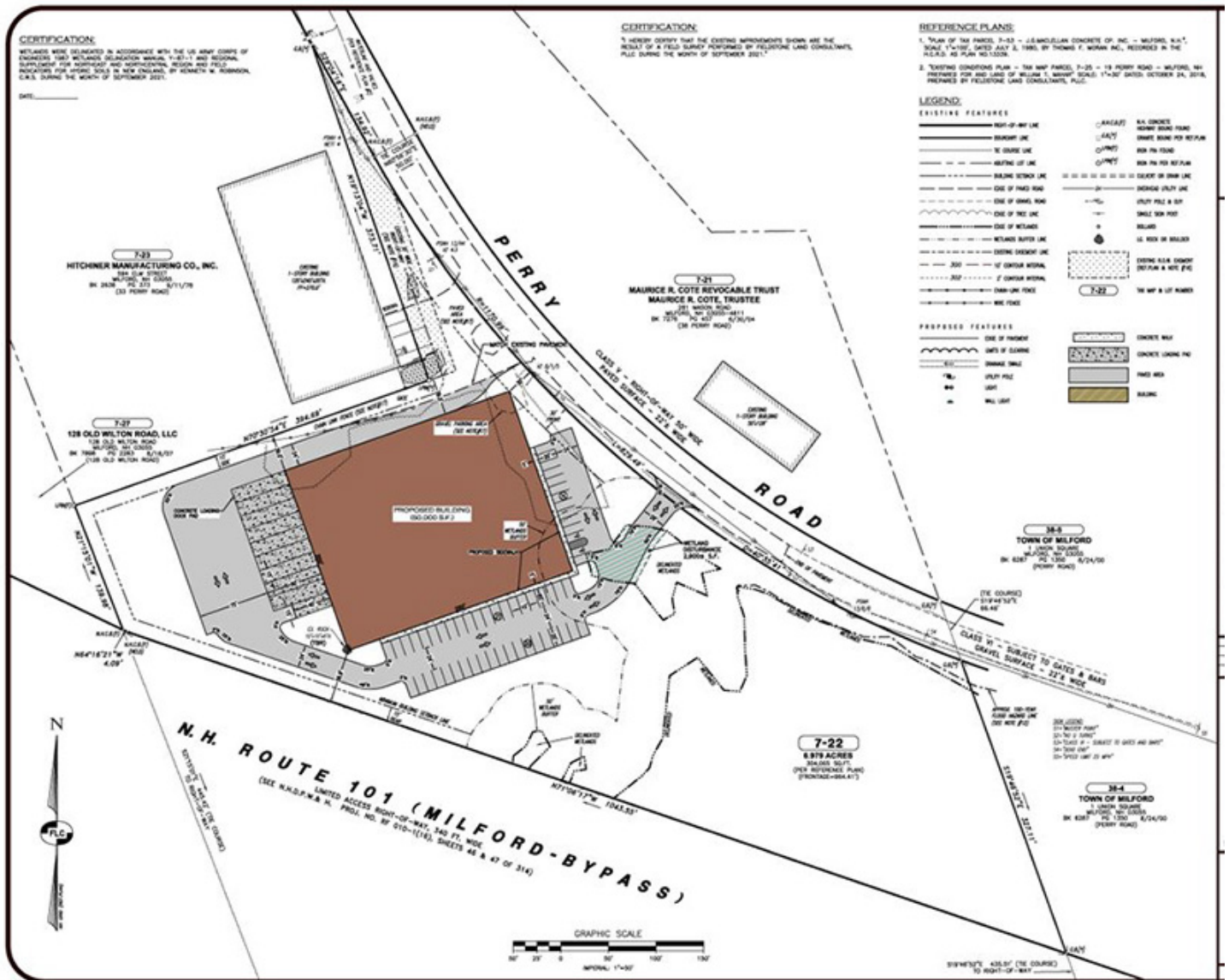


Prolman Realty sells 6.98 acres industrial on Perry Rd. for \$630,000

November 03, 2023 - Northern New England



Milford, NH Prolman Realty, Inc. brokered the sale of 6.98 acres of zoned Integrated Commercial Industrial 2 District (ICI-2) on Perry Rd., according to Mark Prolman, who represented the seller, CSI Wilton Limited Partnership and assisted the buyer, Hitchiner Manufacturing Co.

According to the Hillsborough County Registry of Deeds, the selling price was \$630,000.

New England Real Estate Journal - 17 Accord Park Drive #207, Norwell MA 02061 - (781) 878-4540