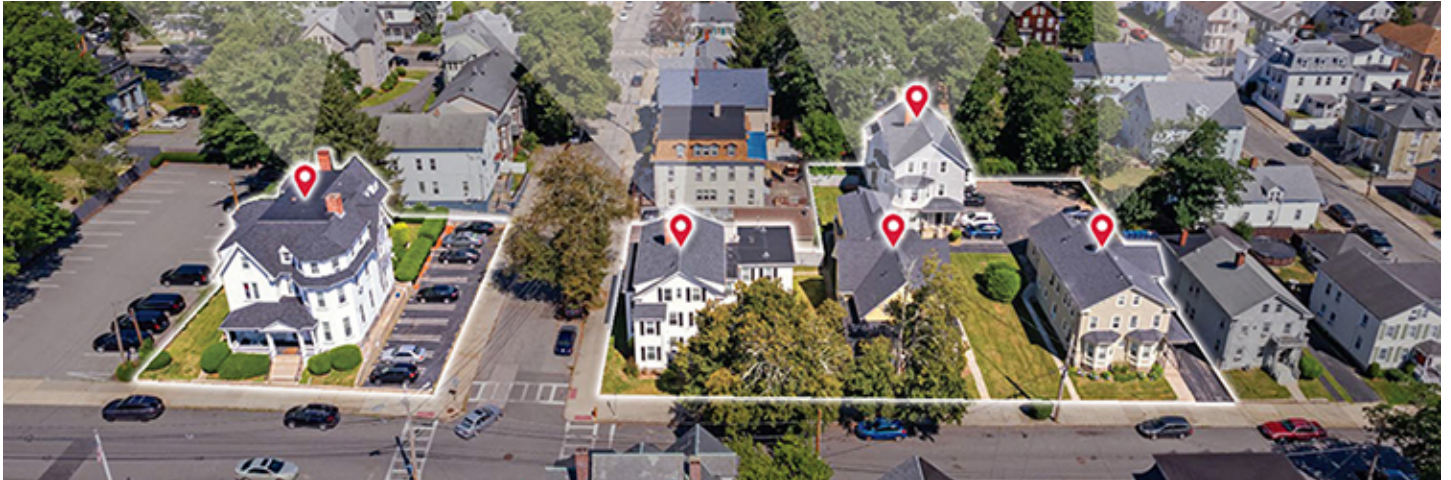




# nerej

## Smith, Pentore and Kelleher of Horvath & Tremblay broker \$3.8m sale of 38-unit multifamily portfolio

January 26, 2024 - Front Section



Fall River, MA Spencer Smith, John Pentore and Dennis Kelleher of Horvath & Tremblay have completed the sale of the Winter Collection, a 38-unit multifamily portfolio. The four-building portfolio closed for \$3.8 million at \$100,447 per unit and at a 7.48% cap rate.

The Winter Collection consists of four multifamily properties located at 107, 121-127, 133-137, and 163 Winter St. in the historic Lower Highlands section of the city. The portfolio contains 38 units consisting of 30 one-bedroom/one-bathroom units, one two-bedroom/one-bathroom unit, and seven studio units in 20,433 s/f of living area on 0.76 acres.

The portfolio is positioned along Winter St. and is close to the Charlton Memorial Hospital and the future Fall River Train Station (MBTA – Stoughton Line) which is scheduled to open in 2024. The Winter Collection provided a rare opportunity to acquire a critical mass of co-located, multifamily properties in a supply-constrained rental market.

New England Real Estate Journal - 17 Accord Park Drive #207, Norwell MA 02061 - (781) 878-4540