

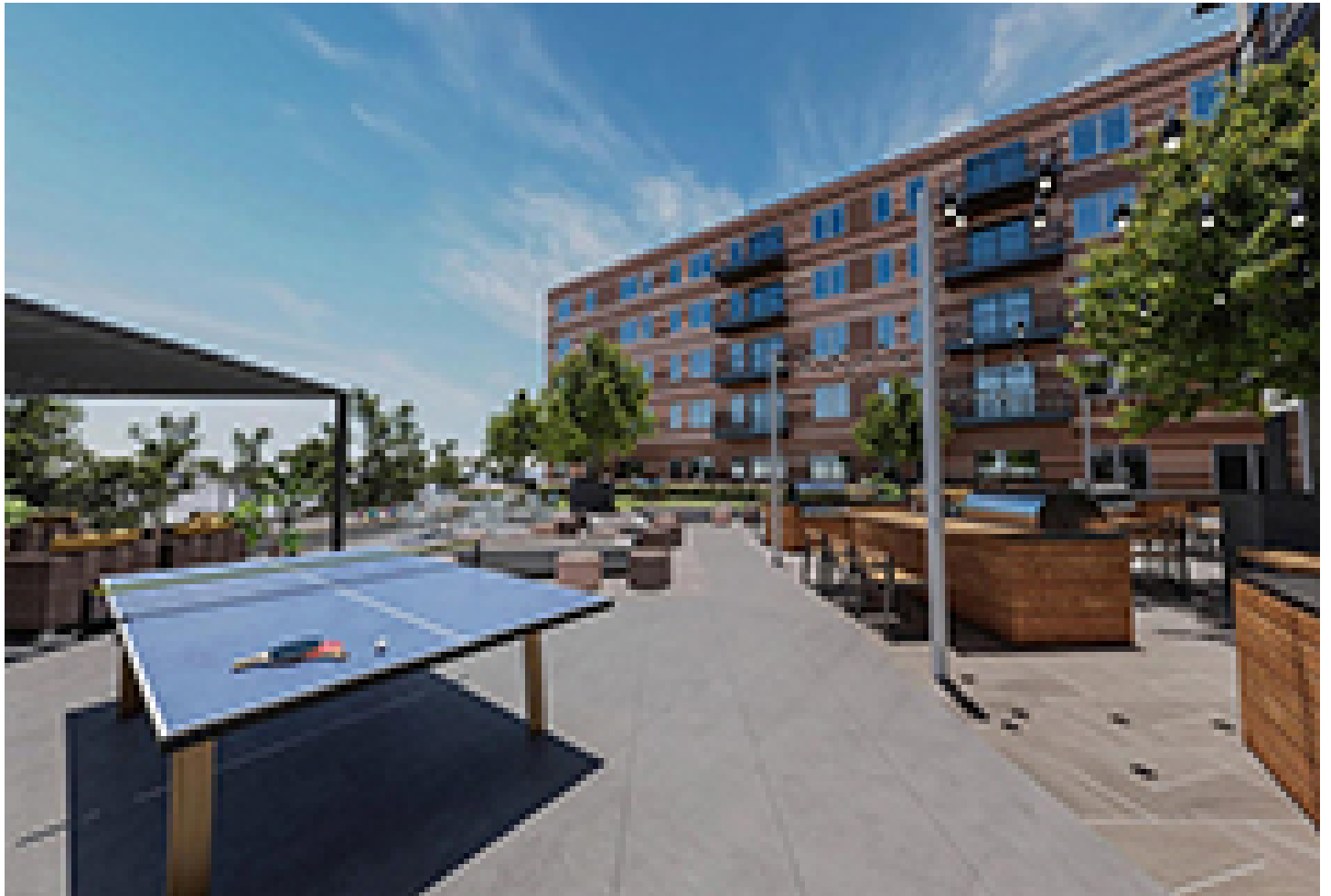


CELEBRATING
55 YEARS

nerej

Imprint now leasing - developed and managed by The Michaels Organization

March 08, 2024 - Front Section



Dorchester, MA Imprint, a new amenity-rich multifamily community located at 780 Morrissey, is now leasing and ready for move-ins. The new community offers comfort and convenience to those seeking high-quality housing in one of Boston's most interesting and diverse neighborhoods, five miles south of Downtown.

Imprint was developed and is being managed by The Michaels Organization, a national leader in residential real estate for the past 50 years.

The dedicated property management team takes pride in exceeding expectations, not just meeting them. From the moment Imprint's residents step through the doors, they are greeted by genuine warmth and a commitment to their well-being.

Whether it's a maintenance request handled quickly or a friendly concierge offering local recommendations, every interaction is infused with the desire to make your life easier and more enjoyable. They understand that luxury extends beyond amenities; it's about feeling valued and well- cared for.

The brand-new, pet-friendly apartments are available in a variety of layouts from studios to two bedrooms. The community also offers indoor and outdoor amenity areas including work-from-home spaces, fitness centers, and two courtyards offering active and passive outdoor opportunities for residents. From its sixth-floor deck, residents can also enjoy views of the Boston skyline, Boston Harbor, and Dorchester Bay.

A lit and landscaped link from Freeport St. to the regional bike network which runs behind the building, and on-site structured parking garage for 136 cars complete with EV chargers.

There is also a shuttle service available that serves the MBTA and other local areas. Additionally, Imprint has engaged Envoy, a private car-share service on the property for the convenience of the residents.

Imprint's convenient location offers residents easy access to a variety of dining, entertainment, and shopping options including a nearby Target, the Twin City Plaza shopping center, and Copley Place shopping mall. Green spaces nearby include the nature trails along the Neponset River Reservation.

Imprint is rewriting the script on apartment living – experience the difference true customer service can make.

New England Real Estate Journal - 17 Accord Park Drive #207, Norwell MA 02061 - (781) 878-4540