

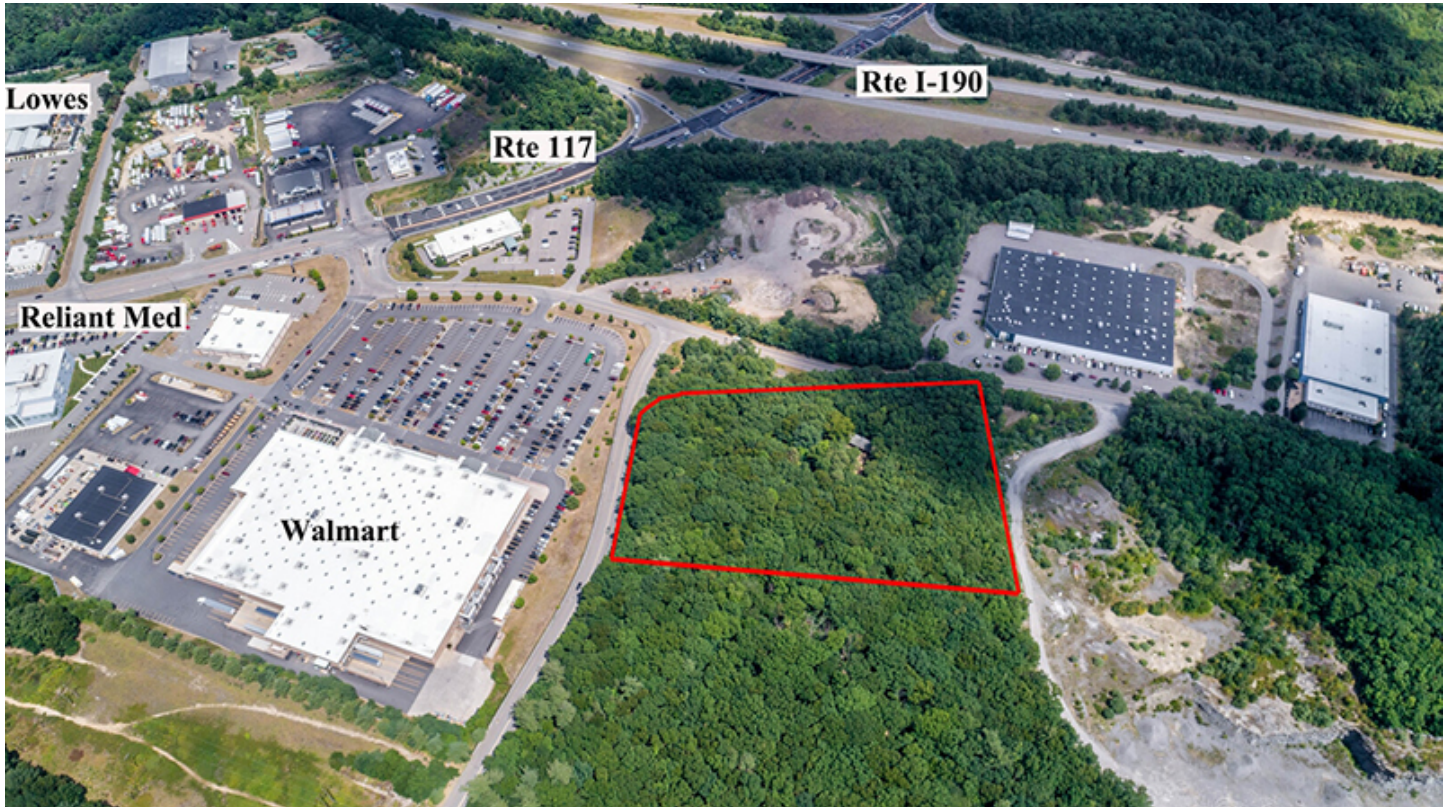


CELEBRATING
55 YEARS

nerej

Capital Group Properties acquires 21 Jungle Rd. - approved for 67,500 s/f industrial building

April 19, 2024 - Front Section



Leominster, MA Capital Group Properties has closed on the property located at 21 Jungle Rd. The 5.5-acre property has received full site plan and Conservation Commission approval for a proposed 67,500 s/f industrial building, which Capital Group Properties anticipates delivering by early 2025.

Pre-leasing is currently underway for mid-size industrial users seeking a class A warehouse/distribution building with 32-foot clear height, sub-dividable to approximately 5,000-67,500 s/f. The site plan includes 16 loading docks and 64 parking spaces to support user operations.

Located at the I-190 and Rte. 117 interchange, 1 mile south of Rte. 2, the development benefits from a location north of Worcester and northwest of Boston and adjacent to national retailers including Lowe's, Walmart, and Tractor Supply Company.

The Planning Board approved the site plan following a public hearing held in February for the property located in the town's Multi-Use 1 Zoning District.

