



nerej

Shawmut Design and Construction, Pawtucket School Department, and Colliers Project Leaders celebrate topping off on Baldwin Elementary School

May 10, 2024 - Front Section

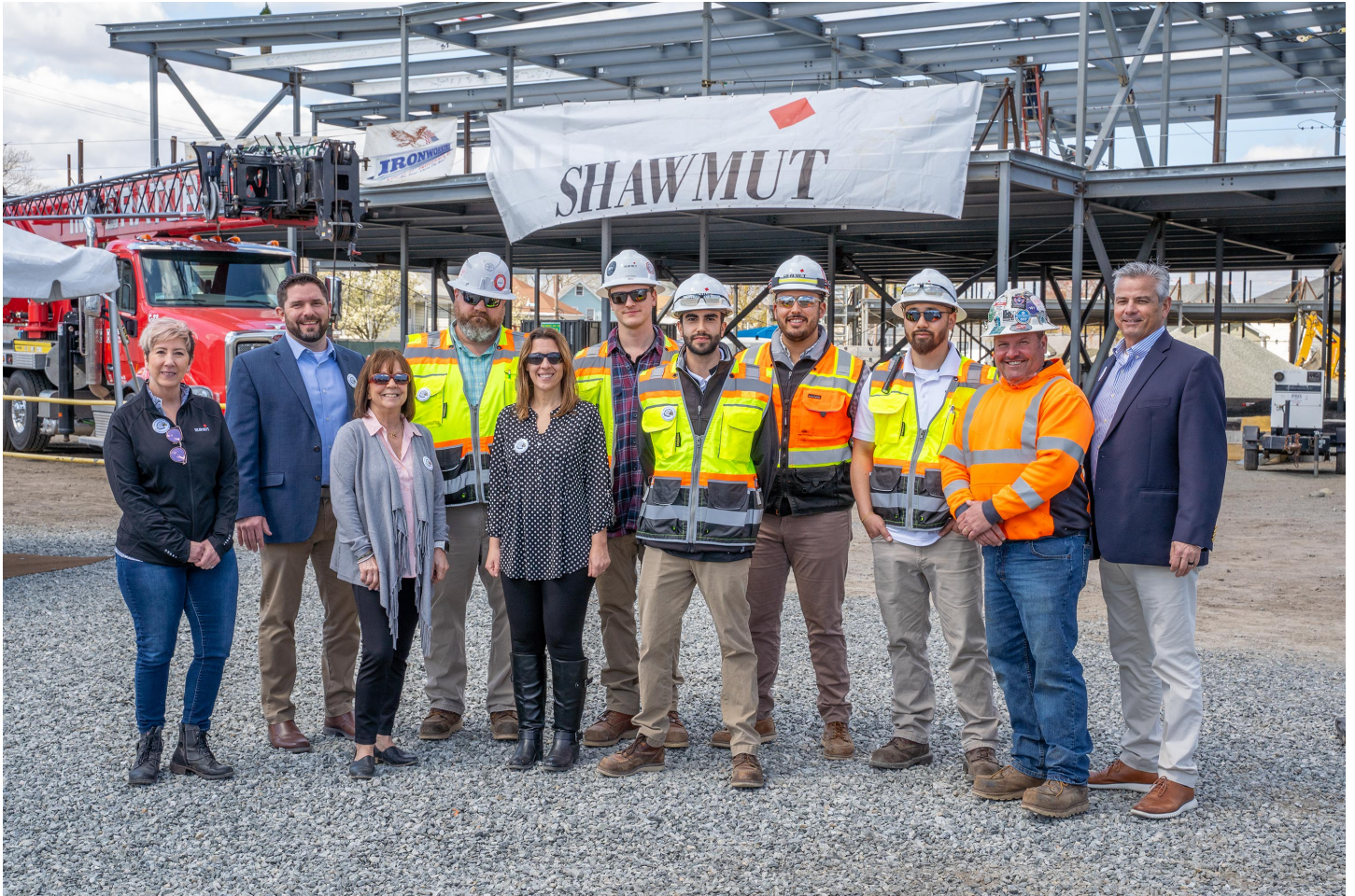


Photo Credit: Ross O'Donohue, Shawmut Design and Construction

Pawtucket, RI Shawmut Design and Construction, Pawtucket School Department, Colliers Project Leaders, and Torrado Architects joined members of the greater Pawtucket community, students, and faculty to commemorate the structural steel topping off milestone for the all-new Elizabeth Baldwin Elementary. Located in the heart of the Woodlawn neighborhood in Pawtucket, the new school will deliver 21st century learning environments to approximately 800 students in Pre-kindergarten through 5th grade.

Led by owner project manager Colliers Project Leaders, construction management firm Shawmut Design and Construction, and design firm Torrado Architects, the project will create a facility with over thirty classrooms as well as dedicated art, music, special education, speech, multi-language learning, ot/pt, health, and maker spaces, each with state-of-the-art technology and plenty of natural light. Three 'Learning Commons' are spread over the building's two floors, each designed to support large groups and cross-grade collaborative learning. Smaller spaces, including breakout and sensory rooms, are available at every grade level. Baldwin will also be home to a full-sized gym and a stage to expand the theatre program.

Photo Credit: Ross O'Donohue, Shawmut Design and Construction

"As we celebrate the topping off milestone at Baldwin Elementary School, let us remember that our mission extends far beyond erecting steel and concrete. Our goal is to build not just a school, but a vibrant hub that fosters community engagement, inspires lifelong learning, and empowers students to reach their full potential," said Chris Maury, Senior Director of Rhode Island at Shawmut Design and Construction. "Together, with our project partners and the Pawtucket community, we are building a brighter future for generations to come."

"This steel topping off ceremony represents more than just the physical construction of a building. It symbolizes our collective dedication to providing every student with the best educational opportunities," said Pawtucket School Department Superintendent Patricia Royal. "As we watch the final steel beam being hoisted into place, let it remind us of our community's strength and resilience and our unwavering commitment to future generations of Pawtucket. I am confident that together, we will continue to achieve great things for the students of Pawtucket."

The school is being built to the NorthEast Collaborative for High Performing Schools (NECHPS) benchmarks for energy efficiency and sustainability. Outside, the site configuration calls for multiple inclusive and age-appropriate play areas, community gardens, outdoor classrooms, and ample green spaces.

New England Real Estate Journal - 17 Accord Park Drive #207, Norwell MA 02061 - (781) 878-4540