

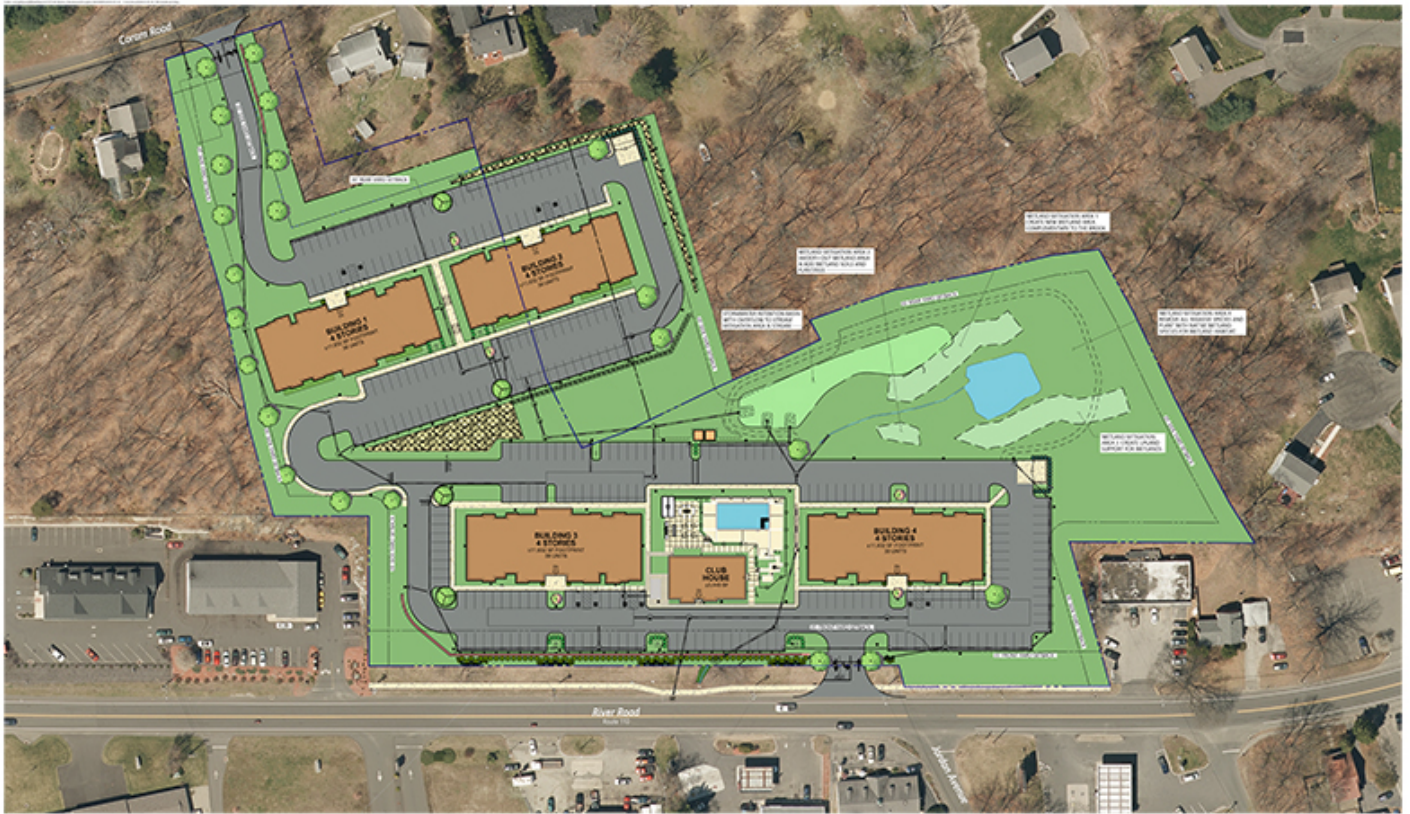
19  
63

CELEBRATING  
55 YEARS

# nerej

## Continental Properties begins construction of 152-unit multi-family

November 22, 2024 - Connecticut



### Illustrative Site Plan

Proposed Residential Development  
0 & 453 River Road (Route 110), Shelton, Connecticut



Shelton, CT Continental Properties began construction of its newest community, located in Fairfield County at 453 River Rd. Located on 9.4 acres between Coram Rd. and River Rd., Continental's new community will consist of four 4-story buildings, each with elevators, a lobby and a mix of one and two bedroom homes.

In total, the community will consist of 152 units comprised of 132 market units and 20 affordable units. The new community will feature river views, amenities, including a 3,400 s/f clubhouse and adjacent pool. It will be just minutes from The Merritt Pkwy. and Rte. 8, less than 15 minutes to New Haven and Bridgeport, less than 10 minutes to the Milford train station, a quick drive to restaurants

and shopping in downtown and a brief walk to the Housatonic River.

Founded over 65 years ago, Continental Properties has built over 25,000 luxury homes and communities throughout the country and Connecticut.

Continental's new community will be its second multi-family residential development in Shelton, joining The Mark, a 228 unit community, which opened in 2016. In addition to The Mark, Continental Properties' other communities in Connecticut include Alterra Rocky Hill (144 units), One Glastonbury Place (145 units), Tempo South Windsor (200 units), Muse Milford (180 units), Montage Rocky Hill (144 units) and Ten Trumbull (202 units).

Continental is building One West Hartford, a 172 unit rental community near Blue Back Sq. in West Hartford Center. One West Hartford is under construction and is expected to open in early 2025.

New England Real Estate Journal - 17 Accord Park Drive #207, Norwell MA 02061 - (781) 878-4540